



Ricoh Metis MF4 Card reader cover and Elatec card reader

3rd round



1 Summary

1.1 Report Objective

The objective of this report is to clarify the Elatec card reader can fit to Ricoh Metis MF4's card reader cover.

- Elatec card reader: TWN4 MultiTech 2 LF HF (T4BT-FB2BEL6 with 250mm cable), S/N 2023112668
- Elatec card reader: TWN4 Slim (T4QC-FC3B7), S/N 2023112669

1.2 Report Conclusion

- Elatec card reader: TWN4 MultiTech 2 LF HF - can fit to Ricoh Metis MF4's card reader cover. Cable length fits too.
- Elatec card reader: TWN4 Slim – I would not recommend, but there might be a solution.

1.3 Remaining Issues

No remaining issue for TWN4 MultiTech 2 LF HF.



2 Test Environment Information

2.1 Machine Information

- Elatec card reader: TWN4 MultiTech 2 LF HF (T4BT-FB2BEL6 with 250mm cable), S/N 2023112668
- Elatec card reader: TWN4 Slim (T4QC-FC3B7), S/N 2023112669
- Ricoh Metis MF4 card reader cover: Sample from RCL
- Machine serial # 91800000104, Metis-MF4d:EU:GER:CO:RMT:技試 2

2.2 Schedule, Location and Team

Schedule – The test started 28th and ended on 29th March 2023

Location – In the DWCC lab at Ricoh Europe Amstelveen Office

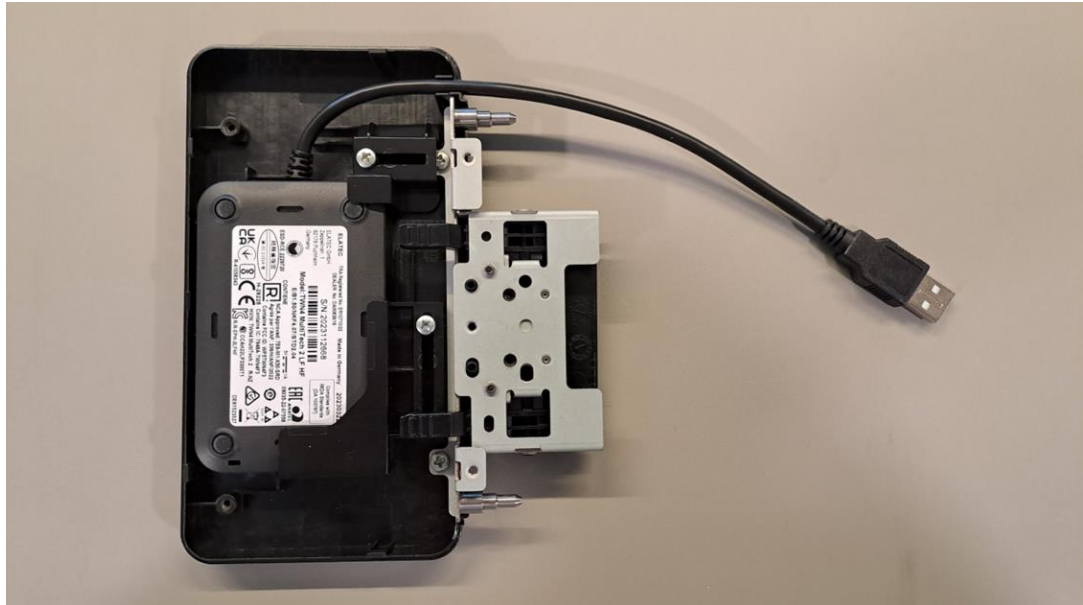
Team – Product Marketing Jun Ueno



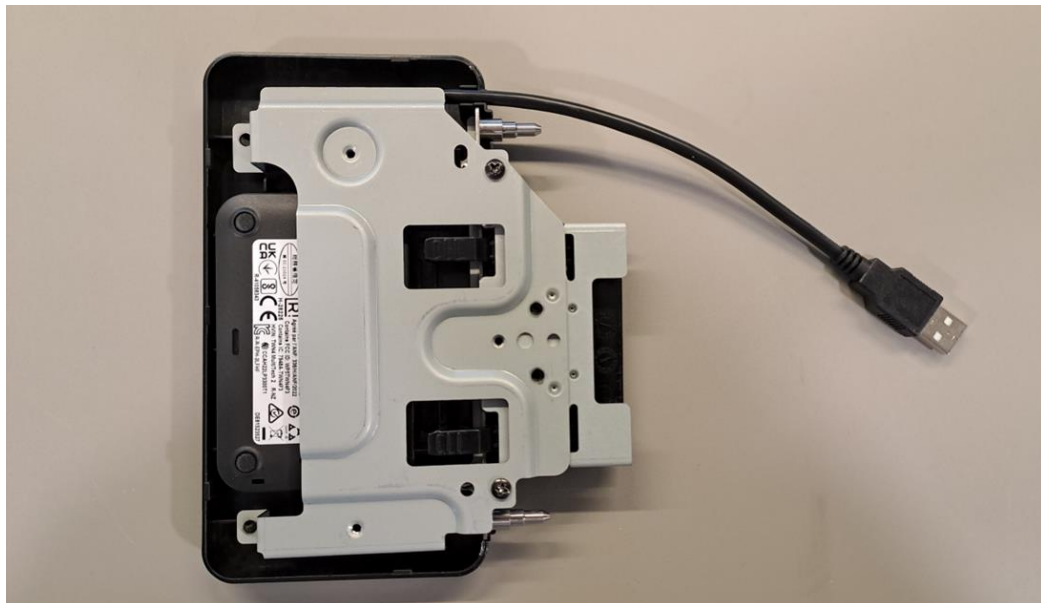
3 Investigation Result Breakdown

3.1 Card reader TWN4 MultiTech 2 LF HF with 250mm cable

The card reader body can fit within the guides of Card reader cover without stress.



With the inner cover there is no conflict at all.



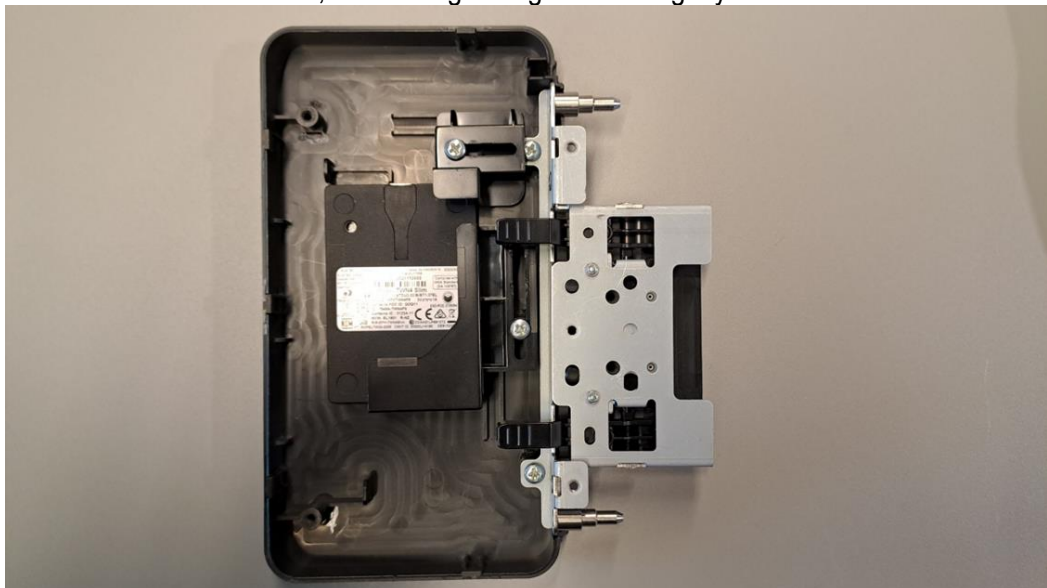


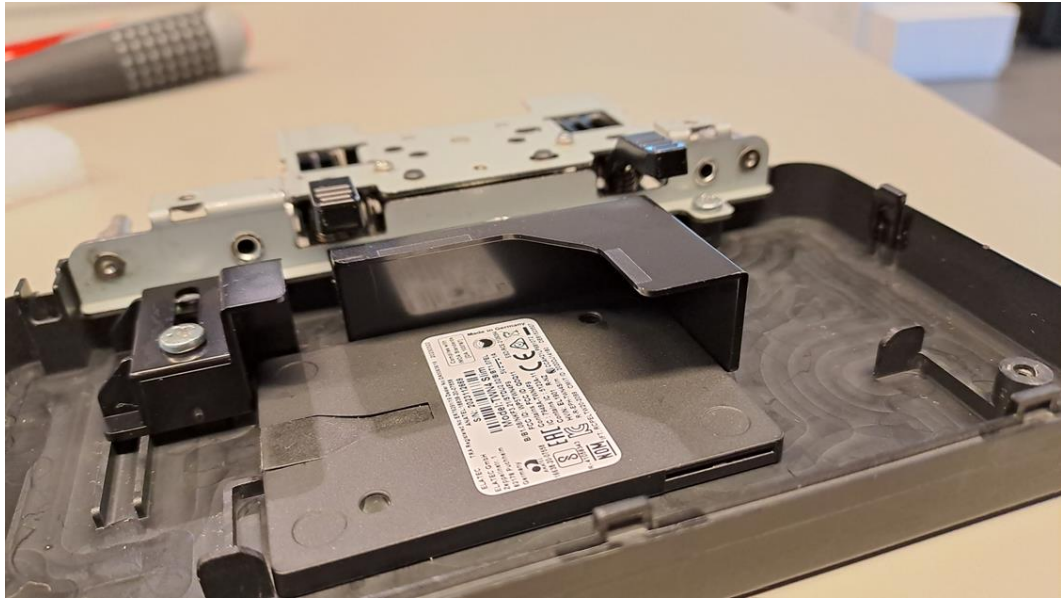
The cable length is good to fit to SOP's USB slot.



3.2 Card reader TWN4 Slim

The width and depth fit within the guides, however it cannot be firmly fixed because it is too thin, even though the guides are tightly screwed.





It would be needed to attach it to the cover with double-sided tape. And on top, it might be rather better if a spacer is filled in.

